

New Zealand Mudsnail (NZM) - Invasion of the East Coast

Pennsylvania Fish & Boat Commission

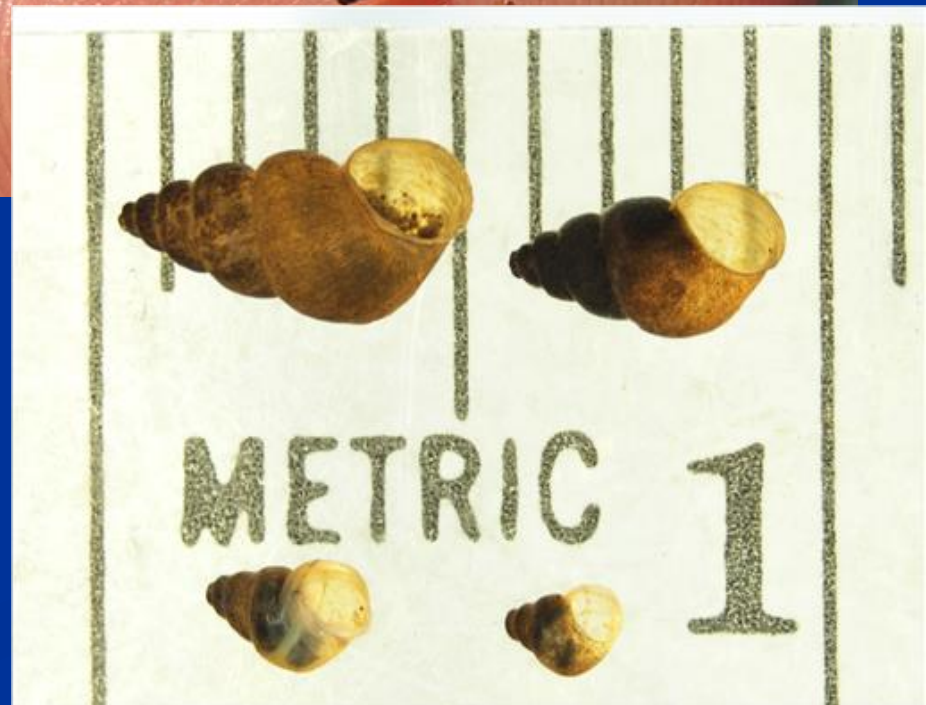


Bob Morgan
Lead AIS Ecologist
PA Fish and Boat Commission

NZM Biology and Ecology 101

(The Really Short Version)

A Tiny Critter That Can Cause BIG Problems



What they lack in size they can make up for in numbers



- In high densities, NZM consume much of a stream's primary producer (plant) biomass
- Can destroy the base of the stream's food web upon which higher organisms, such as fish, depend

Other NZM Problem Characteristics



Foot



Operculum

If that wasn't bad enough, NZM in the U.S. are almost all parthenogenetic female clones!



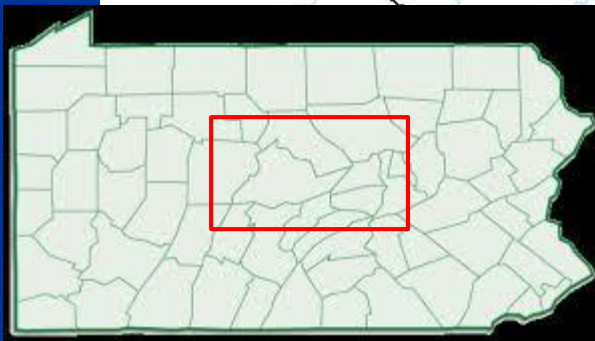
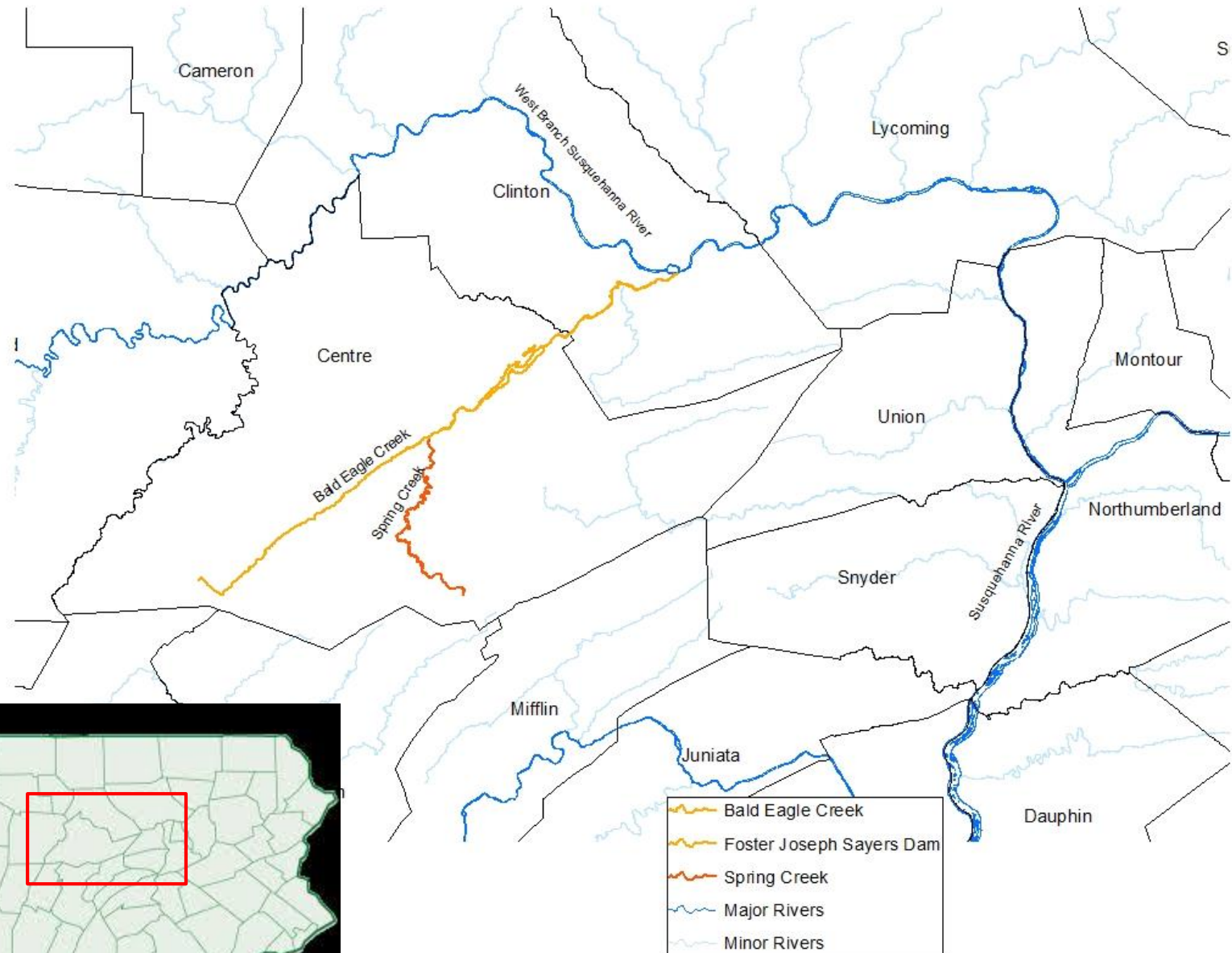
Embryos

- There are 3 different NZM clones known in the U.S., each found in a different region
- **US1** (Western US), **US2** (Great Lakes) , **US3** (Snake River, ID)

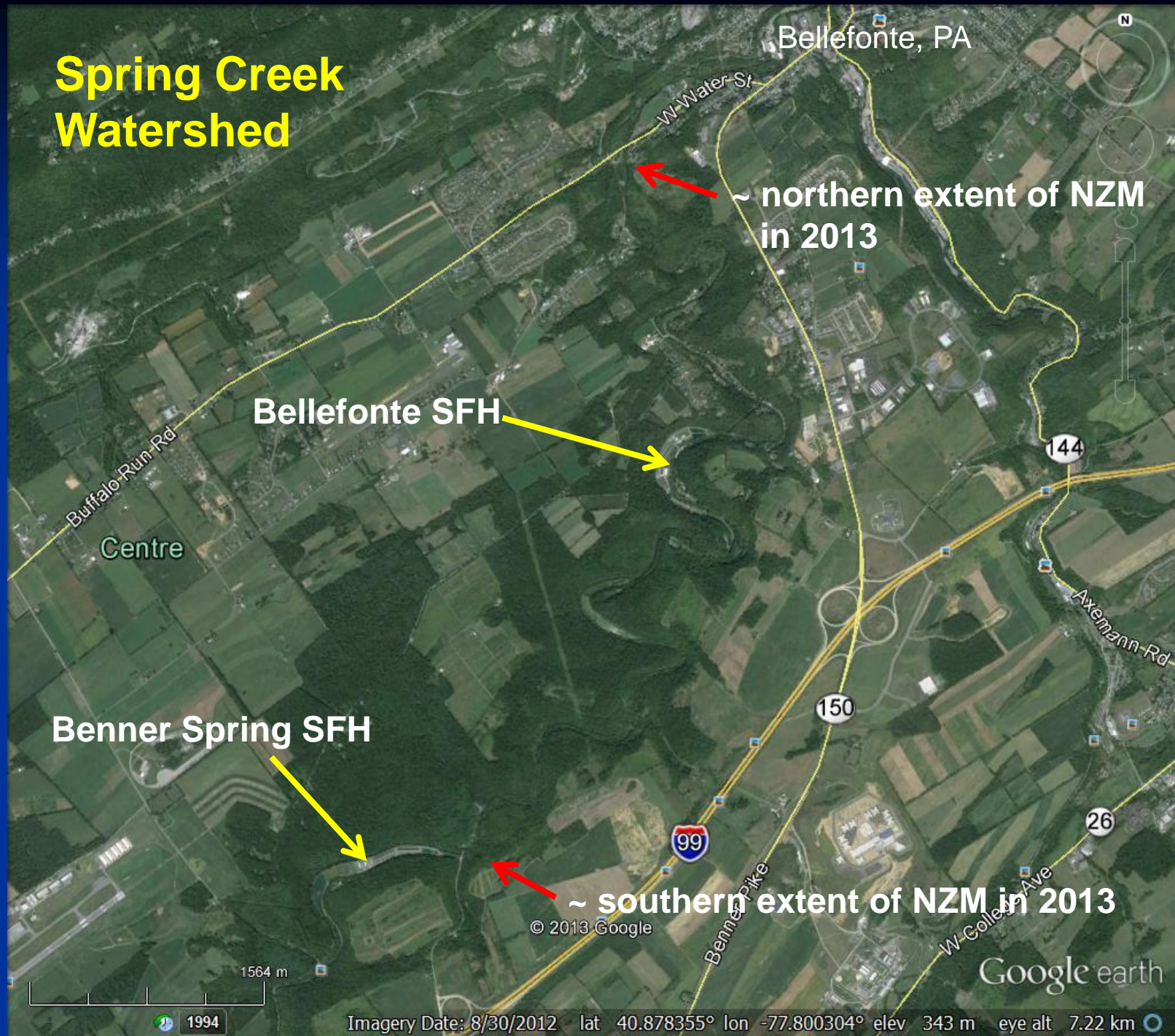
Brief chronology of the discovery of NZM in Spring Creek

- New Zealand Mudsnailes (*Potamopyrgus antipodarum*) (NZM) were discovered on the U.S. Atlantic Slope for the first time in Spring Creek – US1 clone
- PFBC was first made aware of the situation when PA DEP received confirmation from an expert in early October 2013 of NZM in Spring Creek
- Upon confirmation, a press release went out and warning posters were installed along Spring Creek
- Preliminary surveys were conducted in other streams in the region to attempt to assess if NZM had spread out of the Spring Creek watershed

Location



Spring Creek Watershed

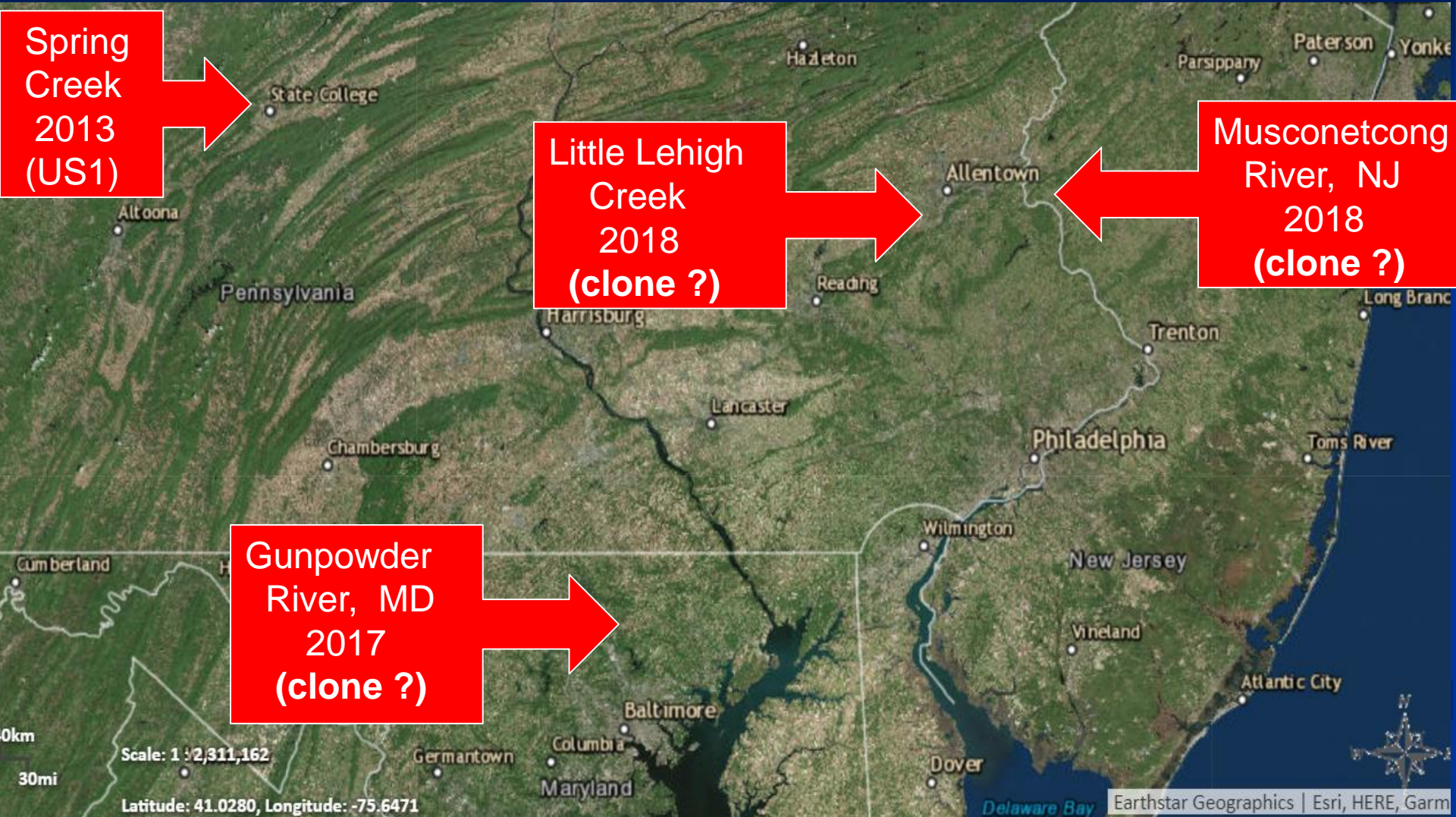




**Typical 2013 NZM
density in Spring
Creek at Fishermans
Paradise ~ 1,000/m²**

**2016 - estimated
densities of
~ 24,000/m²**

Atlantic Slope NZM Invasions



Biosecurity – Slowing the NZM Invasion

NZM are very hard to detect on gear



Photos: Ashley Wilmont,
Pennsylvania Council of Trout
Unlimited

Aquatic Invasive Species Alert New Zealand Mudsna

New Zealand mudsnail (NZM) is in this waterway. The snails are less than ¼ inch, with a dark, narrow, coiled shell with deep grooves. As Invasive Species (AIS), they disrupt ecosystems by rapidly moving with native species for space and food. NZM have the potential to supply for fish in this stream. The snails are found on rocks and attach to fishing gear, boats and other equipment where they are found. **Anglers, boaters, swimmers and tubers can unknowingly spread NZM.**

Help Stop the Spread Clean Your C

Check these areas



New Zealand mudsnail disinfection measures:

- Visually inspect gear and clinging matter in the trash. Do not move mud, organic matter or NZM from this area!
- To kill NZM, three methods are effective:
 - ✓ Freeze gear for a minimum of 6 hours
 - ✓ Soak gear in hot water (120°F to 140°F) for 5 minutes. This method is not recommended for GOR-TEX®
 - ✓ Soak gear for 5 minutes in a 1 to 1 solution of *Formula 409® Cleaner Degreaser Disinfectant* and water. After soaking, thoroughly rinse the gear with plain water. **Simply spraying gear with the disinfectant or the mixture does not work.** Also, general cleaners (including other 409 products) have not been shown to be effective against NZM.

New Zealand mudsnail requires specialized disinfection measures:

- Visually inspect gear and remove and dispose of any clinging matter in the trash. Do not move mud, organic matter or NZM from this area!
- To kill NZM, three methods are effective:
 - ✓ Freeze gear for a minimum of 6 hours
 - ✓ Soak gear in hot water (120°F to 140°F) for 5 minutes. This method is not recommended for GOR-TEX®
 - ✓ Soak gear for 5 minutes in a 1 to 1 solution of *Formula 409® Cleaner Degreaser Disinfectant* and water. After soaking, thoroughly rinse the gear with plain water. **Simply spraying gear with the disinfectant or the mixture does not work.** Also, general cleaners (including other 409 products) have not been shown to be effective against NZM.



STOP AQUATIC HITCHHIKERS!™

For more information about New Zealand mudsnail, visit "Resources" on the PA Sea Grant website at www.paseagrant.org/fact_sheet_group/invasive-species/ and scroll down to Fact Sheets – Invertebrates and the mudsnail photolink.



Questions?

Benner Spring SFH

Public Fishing Access

Warm water
rearing ponds

Spring Creek water
intake for rearing
ponds

Farthest
southern
extent of
NZM

Shiloh Rd

Brick Rd

Google earth

Imagery Date: 8/30/2012 lat 40.855629° lon -77.815282° elev 331 m eye alt 1.47 km

1994

Upper Spring Creek Rearing Ponds



Creek water intake for rearing ponds



© 2013 Google

Spring Creek Rd 3001

Google earth

1994

Imagery Date: 8/30/2012 lat 40.871119° lon -77.796918° elev 262 m eye alt 889 m

Summary

- NZM were not found at the Benner Spring or Bellefonte hatcheries
- NZM were not found in Spruce Creek, the Little Juniata River, Fishing Creek (Clinton County), or in Bald Eagle Creek near the confluence with Spring Creek
- NZM were found in the Upper Spring Creek Rearing Ponds infrastructure
- The apparent heaviest infestations of NZM are in the Fisherman's Paradise reach of Spring Creek
- Only recourse at this time is to try to limit the spread of NZM primarily through public education and outreach